



2017 Healthcare and Education Product Guide



ATRIUMTM

PACKAGING

WNA is one of the leading national suppliers for stock and custom food service packaging for school systems throughout the United States. We provide the widest variety of products specifically designed with educational foodservice in mind.

Why are WNA AtriumTM products better?

- The Atrium line provides packaging designed specifically for schools
- WNA provides cost effective solutions to packaging needs
- WNA understands the National school lunch regulations and guidelines and offers products that make it easier for school districts to meet these guidelines
- The Atrium line offers containers for both hot and cold foods
- WNA can provide packaging to highlight the taste preferences of a diverse student population

Benefits of products made with #6 OPS

- Low Cost
- Excellent Clarity
- FDA Approved-Section 177.1640
- Kosher Certified
- BPA Free
- Stacking Capabilities

Benefits of products made with #1 PETE

- Durable packaging
- Superior Clarity
- Kosher Certified
- BPA Free
- Withstands quick freezing
- FDA Approved-Section 177.1640



Atrium and National Meal Programs

Through the Healthy, Hunger-Free Kids Act 2010, the United States Department of Agriculture made the first major changes to school meals in several years. In keeping with the Healthy, Hunger-Free Kids Act, the Atrium line offers packaging that complements these new regulations and provides facility efficiencies for meal preparation and service.



Atrium and Choose My Plate

Schools provide over 30 million meals throughout the school day. These meals are based on nutrition standards from the USDA. New nutrition standards for schools increase access to healthy food and encourage students to make smart choices. The Atrium line provides a wide variety of products to meet these standards.

The USDA's food guidance system is comprised of the new MyPlate symbol and other materials to help consumers make healthy food choices and to be active every day. Look for containers to fit the following requirements:

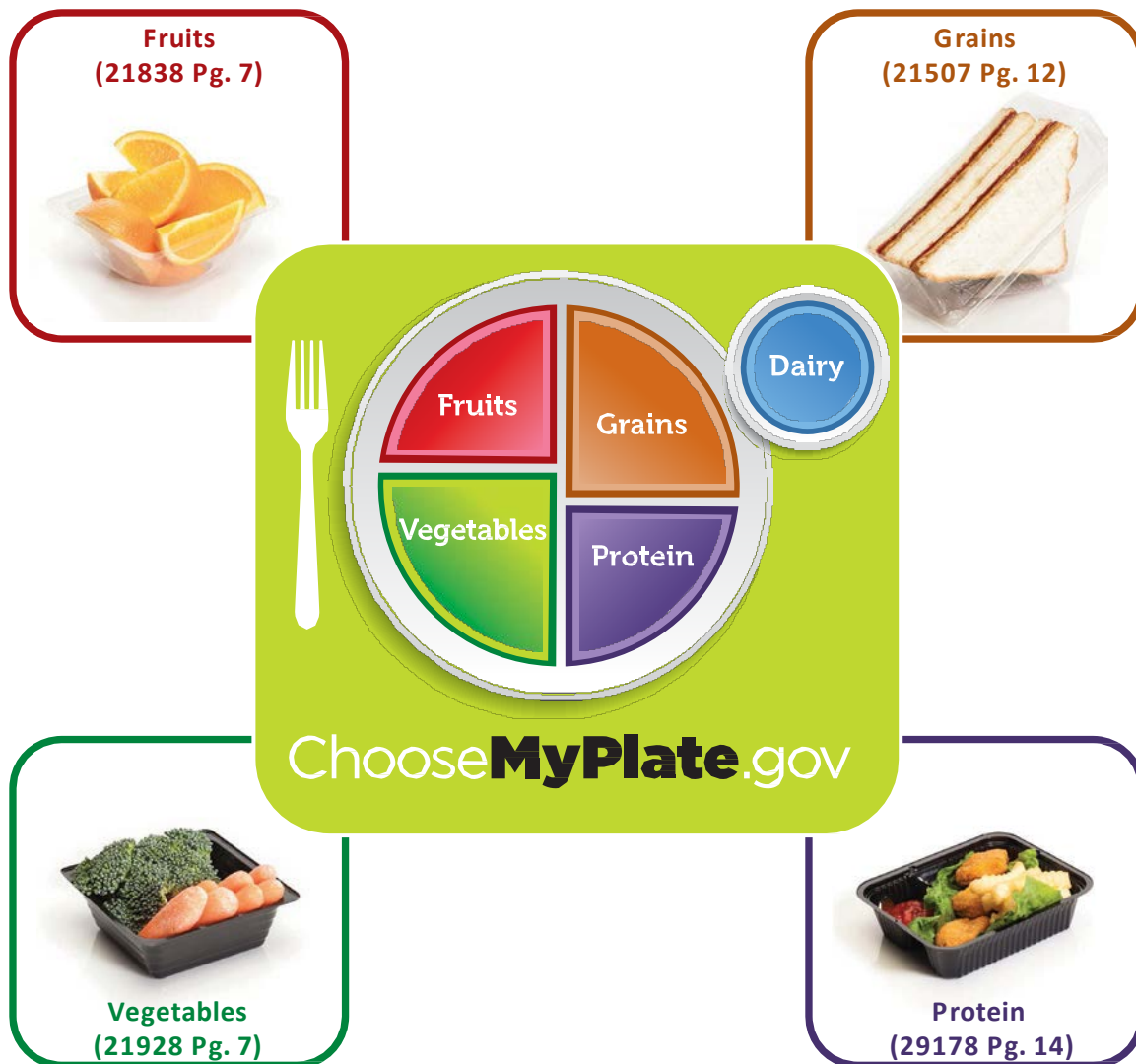


TABLE OF CONTENTS



Offer Versus Serve Page 5-8

Pre-Portioned Snack Trays Page 9



Hinged Clamshells Page 10-14

Entrée & Multi Purpose Trays Page 13-14



Bowls Page 15

Platters Page 16

Look for these symbols on each page



PETE plastic
(Polyethylene Terephthalate)



OPS
(Polystyrene)



Ideal for Cold Foods



Ideal for hot and cold
foods (up to 180
degrees F)

***Featured
Products***



Benefits of Offer versus Serve

- Students can choose the foods they want to eat
- Less food gets thrown away
- Students take less time in the school breakfast or lunch line
- Students have the chance to try new foods
- Students eat more fruits and veggies because they pick what they like
- Designed with schools in mind



Container - 21482



Lid - 21482L

SINGLE SERVING PORTION TRAY - OFFER VERSUS SERVE 2 OZ

Single serving portion trays enhance your school serving line by offering a large variety of shapes and sizes to complement your Offer vs. Serve options. Trays stack easily and allow for pre-portioning of fruits, vegetables, salads, and snacks. These versatile trays will help reduce excess inventory by fulfilling many applications in your facility. *Suitable for hot and cold foods. Check with your local recycling facility to ensure these containers will be accepted.*



CODE	DESCRIPTION	MATERIAL	COLOR	DIMENSIONS	UNITS
21482	2 oz. OVS Tray	12.5 mil OPS	Clear	2 ⁷ / ₁₆ " x 2 ⁷ / ₁₆ " x 1"	3000
21482L	Lid, 2 oz. OVS	10 mil OPS	Clear	2 ¹¹ / ₁₆ " x 2 ¹¹ / ₁₆ " x 3 ³ / ₄ "	3000



21822



21926



21821



Container- 29927
Lid - 29332

SINGLE SERVING PORTION TRAY - OFFER VERSUS SERVE 4 OZ

CODE	DESCRIPTION	MATERIAL	COLOR	DIMENSIONS	UNITS
21821	4 oz. Shallow OVS Tray	7.5 mil OPS	Clear	3 ¹ / ₁₆ " x 3 ¹ / ₁₆ " x 1"	2500
21822	4 oz. Deep OVS Tray	7.5 mil OPS	Clear	3 ¹ / ₂ " x 3 ¹ / ₂ " x 1 ¹ / ₄ "	2500
21926	4 oz. Shallow OVS Tray	7.5 mil OPS	Black	3 ¹ / ₁₆ " x 3 ¹ / ₁₆ " x 1"	2500
21927	4 oz. Deep OVS Tray	7.5 mil OPS	Black	3 ¹ / ₂ " x 3 ¹ / ₂ " x 1 ¹ / ₄ "	2500
29421	4 oz. Shallow OVS Tray (Lid - 29332)	9 mil OPS	Clear	3 ¹ / ₁₆ " x 3 ¹ / ₁₆ " x 1"	2500
29422	4 oz. Deep OVS Tray (Lid - 29332)	9 mil OPS	Clear	3 ¹ / ₂ " x 3 ¹ / ₂ " x 1 ¹ / ₄ "	2500
29426	4 oz. Shallow OVS Tray (Lid - 29332)	9 mil OPS	Black	3 ¹ / ₁₆ " x 3 ¹ / ₁₆ " x 1"	2500
29427	4 oz. Deep OVS Tray (Lid - 29332)	9 mil OPS	Black	3 ¹ / ₂ " x 3 ¹ / ₂ " x 1 ¹ / ₄ "	2500
29822	4 oz. Deep OVS Tray (Lid - 29332)	15 mil OPS	Clear	3 ¹² / ₂₅ " x 3 ¹² / ₂₅ " x 1 ¹ / ₃ "	2500
29927	4 oz. Deep OVS Tray (Lid - 29332)	15 mil OPS	Black	3 ¹² / ₂₅ " x 3 ¹² / ₂₅ " x 1 ¹ / ₃ "	2500
29332	Lid, 4-10 oz. OVS Universal Fit	15 mil OPS	Clear	3 ³ / ₄ " x 3 ³ / ₄ " x 3 ³ / ₄ "	2500



Container- 21828
Lid - 29332



21928

SINGLE SERVING PORTION TRAY - OFFER VERSUS SERVE 5 OZ

CODE	DESCRIPTION	MATERIAL	COLOR	DIMENSIONS	UNITS
21828	5 oz. Deep OVS Tray (Lid - 29332)	7.5 mil OPS	Clear	3 ¹ / ₁₆ " x 3 ¹ / ₁₆ " x 1 ¹ / ₄ "	2500
21829	5 oz. Deep OVS Tray (Lid - 29332)	9 mil OPS	Clear	3 ¹ / ₁₆ " x 3 ¹ / ₁₆ " x 1 ¹ / ₄ "	2500
21928	5 oz. Deep OVS Tray (Lid - 29332)	7.5 mil OPS	Black	3 ¹ / ₁₆ " x 3 ¹ / ₁₆ " x 1 ¹ / ₄ "	2500
21929	5 oz. Deep OVS Tray (Lid - 29332)	9 mil OPS	Black	3 ¹ / ₁₆ " x 3 ¹ / ₁₆ " x 1 ¹ / ₄ "	2500
29829	5 oz. OVS Tray (Lid - 29332)	15 mil OPS	Clear	3 ¹² / ₂₅ " x 3 ¹² / ₂₅ " x 1 ¹ / ₂ "	2500
29929	5 oz. OVS Tray (Lid - 29332)	15 mil OPS	Black	3 ¹² / ₂₅ " x 3 ¹² / ₂₅ " x 1 ¹ / ₃ "	2500
29332	Lid, 4-10 oz. OVS Universal Fit	15 mil OPS	Clear	3 ³ / ₄ " x 3 ³ / ₄ " x 3 ³ / ₄ "	2500



Container- 21935
Lid - 29332



21835



21838

SINGLE SERVING PORTION TRAY - OFFER VERSUS SERVE 6 OZ

CODE	DESCRIPTION	MATERIAL	COLOR	DIMENSIONS	UNITS
21830	6 oz. Deep OVS Tray (Lid - 29332)	14 mil OPS	Clear	3 ¹ / ₂ " x 3 ¹ / ₂ " x 1 ¹ / ₂ "	2000
21835	6 oz. Deep OVS Tray (Lid - 29332)	12.5 mil OPS	Clear	3 ¹ / ₂ " x 3 ¹ / ₂ " x 1 ¹ / ₂ "	2000
21838	6 oz. Deep OVS Bowl (No Lid)	15 mil OPS	Clear	3 ⁷ / ₈ " x 3 ³ / ₄ " x 1 ¹ / ₂ "	2000
21860	6 oz. Deep OVS Tray (Lid - 29332)	14 mil OPS	Black	3 ¹ / ₂ " x 3 ¹ / ₂ " x 1 ¹ / ₂ "	2000
21935	6 oz. Deep OVS Tray (Lid - 29332)	12.5 mil OPS	Black	3 ¹ / ₂ " x 3 ¹ / ₂ " x 1 ¹ / ₂ "	2000
29332	Lid, 4-10 oz. OVS Universal Fit	15 mil OPS	Clear	3 ³ / ₄ " x 3 ³ / ₄ " x 3 ³ / ₄ "	2500



Container - 21980
Lid - 21879



21737

SINGLE SERVING PORTION TRAY - OFFER VERSUS SERVE 8 OZ

CODE	DESCRIPTION	MATERIAL	COLOR	DIMENSIONS	UNITS
21737	8 oz. OVS Tray (Lid - 29332)	14 mil OPS	Clear	3 1/2" x 3 1/2" x 1 7/8"	2000
21738	8 oz. OVS Tray (Lid - 29332)	14 mil OPS	Black	3 1/2" x 3 1/2" x 1 7/8"	2000
21878	8 oz. Portion Tray (Lid - 21879)	12.5 mil OPS	Clear	4 15/16" x 3 5/16" x 1 5/8"	1000
21980	8 oz. Portion Tray (Lid - 21879)	12.5 mil OPS	Black	4 15/16" x 3 5/16" x 1 5/8"	1000
21879	Lid, 8-10 oz. Portion Tray	9 mil OPS	Clear	5 1/4" x 3 5/8" x 9/16"	1000
29332	Lid, 4-10 oz. OVS Universal Fit	15 mil OPS	Clear	3 3/4" x 3 3/4" x 3/4"	2500



21744



21741



21743

SINGLE SERVING PORTION TRAY - OFFER VERSUS SERVE 10 OZ

CODE	DESCRIPTION	MATERIAL	COLOR	DIMENSIONS	UNITS
21741	10 oz. Portion Tray (Lid - 21879)	15 mil OPS	Clear	5" x 3 3/8" x 2"	600
21743	10 oz. Portion Tray (Lid - 21879)	15 mil OPS	Black	5" x 3 3/8" x 2"	600
21744	10 oz. OVS Tray (Lid - 29332)	17.5 mil OPS	Black	3 5/8" x 3 7/16" x 2 3/16"	1125
21746	10 oz. OVS Tray (Lid - 29332)	17.5 mil OPS	Clear	3 5/8" x 3 7/16" x 2 3/16"	1125
21879	Lid, 8-10 oz. Portion Tray	9 mil OPS	Clear	5 3/8" x 3 11/16" x 5/8"	1000
29332	Lid, 4-10 oz. OVS Universal Fit	15 mil OPS	Clear	3 3/4" x 3 3/4" x 3/4"	2500



21961



21117

SINGLE SERVING PORTION TRAY - HINGED OFFER VERSUS SERVE

CODE	DESCRIPTION	MATERIAL	COLOR	DIMENSIONS	UNITS
21117	8 oz. Flat Lid Hinged Tray	12.5 mil OPS	Clear	4 15/16" x 5 1/16" x 1 3/4"	500
21748	8 oz. OVS Hinged Tray	17.5 mil OPS	Clear	3 11/16" x 3 11/16" x 2 1/2"	1350
21750	10 oz. OVS Hinged Tray	17.5 mil OPS	Clear	3 11/16" x 3 11/16" x 2 3/4"	1350
21958	4 oz. OVS Hinged Tray	7.5 mil OPS	Clear	3 5/8" x 3 5/8" x 1 3/8"	1500
21959	4 oz. OVS Hinged Tray	9 mil OPS	Clear	3 5/8" x 3 5/8" x 1 3/8"	1500
21960	6 oz. OVS Hinged Tray	12.5 mil OPS	Clear	3 5/8" x 3 5/8" x 2"	1500
21961	6 oz. OVS Hinged Tray	15 mil OPS	Clear	3 5/8" x 3 5/8" x 2"	1500

✓ Perfect for Snack Programs



21921



Container - 21903
Lid - 21939



21924



21957



21897

PRE-PORTIONED SNACK TRAY

Pre-Portioned Snack Trays are essential to meet the “Smart Snacks in School” rules. The Pre-Portioned Snack Trays can be used for packaging A la carte lunch lines, student stores, vending machines, and for fundraisers. Suitable for hot and cold foods. Check with your local recycling facility to ensure these containers will be accepted.



CODE	DESCRIPTION	MATERIAL	COLOR	DIMENSIONS	UNITS
21896	1 Pocket Snack Tray	15 mil OPS	Black	6 1/2" x 5" x 1 1/2"	1000
21897	2 Pocket Snack Tray	15 mil OPS	Black	6 3/8" x 5" x 1 1/2"	1000
21903	3 Pocket Snack Tray	17.5 mil OPS	Black	6 1/2" x 5" x 1 1/2"	1000
21920	1 Pocket Snack Tray	15 mil OPS	Clear	6 3/8" x 5" x 1 1/2"	1000
21921	2 Pocket Snack Tray	15 mil OPS	Clear	6 1/2" x 5" x 1 1/2"	1000
21924	3 Pocket Snack Tray	17.5 mil OPS	Clear	6 1/2" x 5" x 1 1/2"	1000
21957	2 Pocket Hamburger Tray	17.5 mil OPS	Black	6 3/8" x 5" x 1 3/4"	1000
21939	Lid, Universal Dome for Snack Tray	10 mil OPS	Clear	6 1/8" x 5 5/16" x 1 1/2"	1000



29367



29367



29258



29250

ECO GRAB N' GO HINGED CONTAINERS

Eco Grab N' Go Containers are made with less plastic than conventional containers. These economical and functional containers reduce your facility's overall impact on the environment and create less waste. *Suitable for hot and cold foods. Check with your local recycling facility to ensure these containers will be accepted.*



CODE	DESCRIPTION	MATERIAL	COLOR	DIMENSIONS	UNITS
29250	8" Hinged Submarine Clamshell	11 mil OPS	Clear	8 ³ / ₁₆ " x 4 ¹ / ₂ " x 2 ¹³ / ₁₆ "	250
29258	1 Pocket Medium Clamshell	12.5 mil OPS	Clear	8 ⁵ / ₈ " x 8 ⁵ / ₁₆ " x 2 ²⁹ / ₃₂ "	250
29260	3 Pocket Medium Clamshell	12.5 mil OPS	Clear	8 ⁵ / ₈ " x 8 ⁵ / ₁₆ " x 2 ²⁹ / ₃₂ "	250
29361	1 Pocket Large Clamshell	12.5 mil OPS	Clear	8 ³ / ₄ " x 8 ⁵ / ₈ " x 3"	200
29367	5" Small Clamshell	12.5 mil OPS	Clear	6 ⁷ / ₈ " x 5 ⁵ / ₁₆ " x 1 ¹ / ₂ "	500
29373	3 Pocket Large Clamshell	12.5 mil OPS	Clear	8 ³ / ₄ " x 8 ⁵ / ₈ " x 3"	200



21363



29167



9509



82612

GRAB N' GO HINGED CONTAINERS

Atrium's Grab N' Go Containers are ideal for fresh cut fruits and vegetables, bento boxes, and yogurt parfaits. Suitable for hot and cold foods. Check with your local recycling facility to ensure these containers will be accepted.



CODE	DESCRIPTION	MATERIAL	COLOR	DIMENSIONS	UNITS
2017	Single Pocket with Flat Lid	12.5 mil OPS	Clear	6" x 6" x 1 ¹³ / ₁₆ "	500
9509	Small Utility Clamshell (Shallow)	11 mil OPS	Clear	5 ⁵ / ₁₆ " x 5 ²⁵ / ₃₂ " x 1 ⁵ / ₈ "	500
21257	6" Small Clamshell w/Smooth Dome Lid	12.5 mil OPS	Clear	5 ³ / ₈ " x 5 ⁹ / ₁₆ " x 2 ⁷ / ₈ "	500
21358	1 Pocket Medium Utility Clamshell	14 mil OPS	Clear	7 ³ / ₈ " x 7 ³ / ₈ " x 3"	250
21360	3 Pocket Medium Utility Clamshell	14 mil OPS	Clear	7 ³ / ₈ " x 7 ³ / ₈ " x 3"	250
21361	1 Pocket Large Utility Clamshell	14 mil OPS	Clear	7 ¹⁵ / ₁₆ " x 7 ¹⁵ / ₁₆ " x 3 ¹ / ₁₆ "	200
21363	3 Pocket Large Utility Clamshell	14 mil OPS	Clear	7 ¹⁵ / ₁₆ " x 7 ¹⁵ / ₁₆ " x 3 ¹ / ₁₆ "	200
29167	Medium Shallow Clamshell	11 mil OPS	Clear	8 ¹³ / ₁₆ " x 7 ⁹ / ₁₆ " x 1 ³ / ₄ "	250
82612	2 Pocket Dipping Container (2 oz. Cup)	12.5 mil OPS	Clear	5 ⁵ / ₁₆ " x 5 ²⁵ / ₃₂ " x 1 ¹ / ₂ "	500



21552



2178



2010

GRAB N' GO CONTAINERS - LUNCH BOXES

Overcrowded schools and limited time for students to eat their meals are daily challenges. Lunch Boxes pre-packed in advance and ready for quick service are a great solution. PETE suitable only for cold foods. Check with your local recycling facility to ensure these containers will be accepted.



CODE	DESCRIPTION	MATERIAL	COLOR	DIMENSIONS	UNITS
2009	Extra Deep Lunch Box	12.5 mil OPS	Clear	8 ³ / ₁₆ " x 5 ²⁷ / ₃₂ " x 3 ³ / ₄ "	250
2010	Shallow Lunch Bow	10 mil OPS	Clear	8 ³ / ₁₆ " x 5 ²⁷ / ₃₂ " x 2 ³ / ₄ "	500
2011	Deep Lunch Box	10 mil OPS	Clear	8 ³ / ₁₆ " x 5 ²⁷ / ₃₂ " x 3 ¹³ / ₁₆ "	500
21552	Lunch Box w/Handle	18 mil PETE	Clear	7 ³ / ₄ " x 7 ¹ / ₂ " x 3 ⁹ / ₁₆ "	100
2178	Square Utility EX Shallow	15 mil OPS	Clear	6 ¹ / ₄ x 4 ⁷ / ₈ x 1 ¹ / ₂ "	300



21507



21517



2452

SANDWICHES, SUBS, AND MORE

Sandwiches are the cornerstone of any school meal program. Atrium offers a variety of shapes and sizes for any sandwich on your menu. Choose our Sand-Wedge® containers for viewability of sandwich ingredients. Suitable for hot and cold foods. Check with your local recycling facility to ensure these containers will be accepted.



CODE	DESCRIPTION	MATERIAL	COLOR	DIMENSIONS	UNITS
2452	Small Hotdog Container	12.5 mil OPS	Clear	6 ³ / ₈ " x 3" x 2 ⁹ / ₁₆ "	250
21050	8" Hinged Submarine Container	12.5 mil OPS	Clear	8 ³ / ₁₆ " x 4 ¹ / ₂ " x 2 ¹³ / ₁₆ "	250
21507	Small Sand-Wedge®	12.5 mil OPS	Clear	6 ¹ / ₂ " x 3 ¹ / ₄ " x 3 ³ / ₈ "	500
21508	Large Sand-Wedge®	12.5 mil OPS	Clear	6 ¹ / ₂ " x 3 ³ / ₄ " x 3 ¹ / ₈ "	500
21517	Extra Large Sand-Wedge®	15 mil OPS	Clear	6 ⁵ / ₈ " x 5" x 3 ¹ / ₈ "	400



PETE HINGED CONTAINERS

PETE containers have an upscale retail look. These hinged containers can enhance presentation and are offered with a black or clear base. *PETE suitable only for cold foods. Check with your local recycling facility to ensure these containers will be accepted.*



CODE	DESCRIPTION	MATERIAL	COLOR	DIMENSIONS	UNITS
2345	Square Utility EX Shallow	15 mil PETE	Black/Clear	6 ¹ / ₄ " x 4 ⁷ / ₈ " x 1 ¹ / ₂ "	300
2348	Salad Container	14 mil PETE	Black/Clear	8" x 9 ³ / ₄ " x 1 ¹¹ / ₁₆ "	250
9362	Square Utility Container	15 mil PETE	Clear	6 ¹ / ₄ " x 4 ⁷ / ₈ " x 2 ¹ / ₄ "	300
29567	5x5 Clamshell	15 mil PETE	Black/Clear	5" x 4 ³ / ₄ " x 2 ⁷ / ₈ "	500



Tray - 82723
Lid - 82725

ENTREE AND MEAL TRAYS

Entrée and meal trays are ideal for your larger reimbursable meals, vending machines and complete meal solutions. *Suitable for hot and cold foods. Check with your local recycling facility to ensure these containers will be accepted.*



CODE	DESCRIPTION	MATERIAL	COLOR	DIMENSIONS	UNITS
82723	3 Pocket Cold Food Tray	24 mil OPS	Clear	8 ¹ / ₂ " x 6 ⁷ / ₁₆ " x 2 ¹ / ₈ "	300
82725	Lid, 3 Pocket Food Tray	12.5 mil OPS	Clear	8 ²¹ / ₂₅ " x 6 ⁷ / ₁₆ " x 1 ¹ / ₂ "	300



21505



21513



21506



29191



21509



29178

MULTI PURPOSE TRAYS

Multipurpose trays are useful for breakfast, lunch and snack program options. Suitable for hot and cold foods. Check with your local recycling facility to ensure these containers will be accepted.



CODE	DESCRIPTION	MATERIAL	COLOR	DIMENSIONS	UNITS
21505	Small Nacho Tray - 2 oz. Cup (No Lid)	14 mil OPS	Clear	6 ¹ / ₈ " x 5 ¹ / ₈ " x 1 ¹ / ₂ "	500
21506	Large Nacho Tray (4 oz. Cup)	15 mil OPS	Clear	8" x 6 ¹ / ₄ " x 1 ⁹ / ₁₆ "	500
21509	Hinged Nacho Container (3.5 oz. Cup)	10 mil OPS	Clear	8 ¹ / ₁₆ " x 5 ³ / ₄ " x 3 ¹ / ₈ "	250
21513	3 Pocket Nacho Tray (No Lid)	14 mil OPS	Black	8 ⁹ / ₁₆ " x 6 ¹⁵ / ₁₆ " x 1 ¹³ / ₁₆ "	500
29178	Small Nacho Tray - 2 oz. Cup (No Lid)	14 mil OPS	Black	6 ¹ / ₈ " x 5 ¹ / ₈ " x 1 ¹ / ₂ "	500
29191	Large Nacho Tray (4 oz. Cup)	15 mil OPS	Black	8" x 6 ¹ / ₄ " x 1 ⁹ / ₁₆ "	500
29509	Hinged Nacho Container (3.5 oz. Cup)	12.5 mil OPS	Clear	8 ¹ / ₁₆ " x 5 ³ / ₄ " x 3 ¹ / ₈ "	250
21504	Lid, Large Nacho Tray	10 mil OPS	Clear	8 ¹ / ₈ " x 6 ¹ / ₂ " x 1 ¹ / ₂ "	250



Bowl - 82638
Lid - 82639



Bowl - 5BB008
Lid - 5BB200-DL



Bowl - 24025
Lid - 24200

✓ Perfect for Hot & Cold Foods



5BB012-BK



Bowl - 24009
Lid - 24400

INVISI-BOWL® AND PETE SQUARE BOWLS

Atrium Bowls are stylish options that offer a retail look which enhances presentation and visibility. PETE suitable for cold food only. Check with your local recycling facility to ensure these containers will be accepted.



CODE	DESCRIPTION	MATERIAL	COLOR	DIMENSIONS	UNITS
24009	8 oz. Invisi-Bowl®	17.5 mil OPS	Black	4 ⁵ / ₈ " x 4 ⁵ / ₈ " x 1 ³ / ₁₆ "	500
24013	12 oz. Invisi-Bowl®	20 mil OPS	Black	4 ⁵ / ₈ " x 4 ⁵ / ₈ " x 1 ⁵ / ₈ "	500
24017	16 oz. Invisi-Bowl®	17.5 mil OPS	Black	5 ⁵ / ₈ " x 5 ⁵ / ₈ " x 1 ³ / ₄ "	500
24025	24 oz. Invisi-Bowl®	20 mil OPS	Black	5 ⁵ / ₈ " x 5 ⁵ / ₈ " x 2 ¹ / ₄ "	500
5BB008	8 oz. Small Square Bowl	20 mil PETE	Clear	5" x 5" x 1 ¹ / ₂ "	500
5BB008-BK	8 oz. Small Square Bowl	20 mil PETE	Black	5" x 5" x 1 ¹ / ₂ "	500
5BB012-BK	12 oz. Small Square Bowl	20 mil PETE	Black	5" x 5" x 2"	500
5BB016-BK	16 oz. Small Square Bowl	24 mil PETE	Black	5" x 5" x 2 ⁵ / ₈ "	500
82638	24 oz. Salad Entree Base	22.5 mil PETE	Black	8 ⁷ / ₈ " x 8 ⁷ / ₈ " x 1 ⁵ / ₈ "	250
24100	Flat Lid, 8 oz. & 12 oz. Invisi-Bowl®	15 mil OPS	Clear	4 ⁵ / ₈ " x 4 ⁵ / ₈ " x	500
24200	Flat Lid, 16 oz. & 24 oz. Invisi-Bowl®	15 mil OPS	Clear	5 ⁵ / ₈ " x 5 ⁵ / ₈ " x	500
24400	Dome Lid, 8 oz. & 12 oz. Invisi-Bowl®	15 mil OPS	Clear	4 ⁵ / ₈ " x 4 ⁵ / ₈ " x	500
24500	Dome Lid, 16 oz. & 24 oz. Invisi-Bowl®	15 mil OPS	Clear	5 ⁵ / ₈ " x 5 ⁵ / ₈ " x	500
5BB200-DL	Dome Lid for Small Square Bowl	16 mil PETE	Clear	5" x 5" x 1 ¹ / ₂ "	500
82639	Lid, 24 oz. Salad Entree Base	15.5 mil PETE	Clear	9" x 9" x 3/4"	250



21611



21972



21121



21954



21631

21482 pg. 6

PLATTERS

Platters offer a variety of sizes and shapes to meet your breakfast, entrée, salad and snack needs. *Suitable for hot and cold foods. Check with your local recycling facility to ensure these containers will be accepted.*



CODE	DESCRIPTION	MATERIAL	COLOR	DIMENSIONS	UNITS
21121	Small Platter Combo	12.5 mil OPS	Black	5 ⁷ / ₈ " x 4" x 2 ⁵ / ₈ "	250
21611	Large Salad Platter Combo	15 mil OPS	Black	8 ³ / ₄ " x 6" x 2 ¹ / ₈ "	250
21621	Small Salad Platter Combo	12.5 mil OPS	Black	5 ³ / ₁₆ " x 5 ¹ / ₄ " x 3 ³ / ₁₆ "	250
21631	Medium Salad Platter Combo	12.5 mil OPS	Black	7 ¹ / ₁₆ " x 4 ¹ / ₈ " x 2 ¹ / ₈ "	250
21954	Two Compartment Oval Platter	15 mil OPS	Black	9 ¹ / ₂ " x 7" x 1 ¹ / ₂ "	500
21972	One Compartment Oval Platter	15 mil OPS	Black	9 ¹ / ₂ " x 7" x 1 ¹ / ₂ "	500
21971	Lid, Oval Platter	12.5 mil OPS	Clear	9 ⁷ / ₈ " x 7 ¹ / ₂ " x 1 ¹ / ₂ "	500

INDEX

CODE	DESCRIPTION	UNITS	CU FT	LBS	PALLET PG	
2009	Extra Deep Lunch Box	250	2.69	13	35	12
2010	Shallow Lunch Bow	500	4.1	20	20	12
2011	Deep Lunch Box	500	4.1	20	20	12
2017	Single Pocket with Flat Lid	500	4.1	20	20	11
2178	Square Utility EX Shallow	300	3.3	16	30	13
2345	Square Utility EX Shallow	300	3.3	19	30	13
2348	Salad Container	250	3.7	24	30	13
2452	Small Hot dog Container	250	2.0	8	50	12
9362	Square Utility Container	300	3.3	20	30	13
9509	Small Utility Clamshell (Shallow)	500	2.4	14	40	11
21050	8" Hinged Submarine Container	250	2.0	11	50	12
21117	8 oz. Flat Lid Hinged Tray	500	1.2	14	60	8
21121	Small Platter Combo	250	1.8	11	50	16
21257	6" Small Clamshell w/Smooth Dome Lid	500	2.7	16	35	11
21358	1 Pocket Medium Utility Clamshell	250	3.2	19	30	11
21360	3 Pocket Medium Utility Clamshell	250	3.2	19	30	11
21361	1 Pocket Large Utility Clamshell	200	3.2	18	30	11
21363	3 Pocket Large Utility Clamshell	200	3.2	18	30	11
21410	Lid, Large Lunch Tray	640	6.8	33	16	13
21482	2 oz. OVS Tray	3000	2.2	10	42	6
21482L	Lid, 2 oz. OVS	3000	2.7	10	36	6
21504	Lid, Large Nacho Tray	250	2.7	7	35	14
21505	Small Nacho Tray - 2 oz. Cup (No Lid)	500	1.3	10	48	14
21506	Large Nacho Tray (4 oz. Cup)	500	1.3	15	60	14
21507	Small Sand-Wedge®	500	1.9	12	42	12
21508	Large Sand-Wedge®	500	2.7	13	36	12
21509	Hinged Nacho Container (3.5 oz. Cup)	250	2.7	11	35	14
21513	3 Pocket Nacho Tray (No Lid)	500	1.8	17	50	14
21517	Extra Large Sand-Wedge®	400	4.1	17	20	12
21552	Lunch Box w/Handle	100	1.3	11	60	12
21611	Large Salad Platter	250	3.2	21	24	16
21621	Small Salad Platter	250	1.8	10	40	16
21631	Medium Salad Platter	250	1.8	13	40	16
21737	8 oz. OVS Tray (Lid - 29332)	2000	1.8	15	50	8
21738	8 oz. OVS Tray (Lid - 29332)	2000	1.8	15	50	8
21741	10 oz. Portion Tray (Lid - 21879)	600	1.3	7	60	8
21743	10 oz. Portion Tray (Lid - 21879)	600	1.3	7	60	8
21744	10 oz. OVS Tray (Lid - 29332)	1125	1.8	11	50	8
21746	10 oz. OVS Tray (Lid - 29332)	1125	1.8	11	50	8
21748	8 oz. OVS Hinged Tray	1350	5.1	28	20	8
21750	10 oz. OVS Hinged Tray	1350	5.1	28	20	8
21821	4 oz. Shallow OVS Tray	2500	.9	9	72	6
21822	4 oz. Deep OVS Tray	2500	.9	9	72	6
21828	5 oz. Deep OVS Tray (Lid - 29332)	2500	.9	9	72	7
21829	5 oz. Deep OVS Tray (Lid - 29332)	2500	1.2	12	60	7
21830	6 oz. Deep OVS Tray (Lid - 29332)	2000	1.8	14	50	7
21835	6 oz. Deep OVS Tray (Lid - 29332)	2000	1.8	13	50	7
21838	6 oz. Deep OVS Bowl (No Lid)	2000	2.7	16	35	7
21860	6 oz. Deep OVS Tray (Lid - 29332)	2000	1.8	14	50	7
21878	8 oz. Portion Tray (Lid - 21879)	1000	1.3	9	75	8
21879	Lid, 8-10 oz. Portion Tray	1000	1.8	8	50	8
21896	1 Pocket Snack Tray	1000	4.1	22	20	9
21897	2 Pocket Snack Tray	1000	4.1	22	20	9
21903	3 Pocket Snack Tray	1000	4.1	25	20	9
21920	1 Pocket Snack Tray	1000	4.1	22	20	9
21921	2 Pocket Snack Tray	1000	4.1	22	20	9
21924	3 Pocket Snack Tray	1000	4.1	24	20	9

CODE	DESCRIPTION	UNITS	CU FT	LBS	PALLET PG
21926	4 oz. Shallow OVS Tray	2500	.9	9	72 6
21927	4 oz. Deep OVS Tray	2500	.9	9	72 6
21928	5 oz. Deep OVS Tray (Lid - 29332)	2500	.9	9	72 7
21929	5 oz. Deep OVS Tray (Lid - 29332)	2500	1.2	12	60 7
21935	6 oz. Deep OVS Tray (Lid - 29332)	2000	1.8	13	50 7
21939	Lid, Universal Dome for Snack Tray	1000	4.1	16	20 9
21954	Two Compartment Oval Platter	500	.9	20	72 16
21957	2 Pocket Hamburger Tray	1000	4.1	24	20 9
21958	4 oz. OVS Hinged Tray	1500	5.1	15	20 8
21959	4 oz. OVS Hinged Tray	1500	5.1	17	20 8
21960	6 oz. OVS Hinged Tray	1500	5.1	22	20 8
21961	6 oz. OVS Hinged Tray	1500	5.1	26	20 8
21971	Lid, Oval Platter	500	2.7	17	35 16
21972	One Compartment Oval Platter	500	.9	20	72 16
21980	8 oz. Portion Tray (Lid - 21879)	1000	1.3	9	75 8
24009	8 oz. Invisi-Bowl®	500	1.8	9	42 15
24013	12 oz. Invisi-Bowl®	500	1.8	11	42 15
24017	16 oz. Invisi-Bowl®	500	2.7	13	36 15
24025	24 oz. Invisi-Bowl®	500	3.6	15	25 15
24100	Flat Lid, 8 oz. & 12 oz. Invisi-Bowl®	500	1.8	8	42 15
24200	Flat Lid, 16 oz. & 24 oz. Invisi-Bowl®	500	2.6	11	36 15
24400	Dome Lid, 8 oz. & 12 oz. Invisi-Bowl®	500	1.8	9	42 15
24500	Dome Lid, 16 oz. & 24 oz. Invisi-Bowl®	500	2.7	12	36 15
29167	Medium Shallow Clamshell	250	1.8	15	50 11
29178	Small Nacho Tray - 2 oz. Cup (No Lid)	500	1.3	9	60 14
29191	Large Nacho Tray (4 oz. Cup)	500	1.3	15	75 14
29250	8" Hinged Submarine Clamshell	250	1.8	9	50 10
29258	1 Pocket Medium Clamshell	250	2.6	17	35 10
29260	3 Pocket Medium Clamshell	250	2.1	17	50 10
29332	Lid, 4-10 oz. OVS Universal Fit	2500	3.5	19	24 6-8
29361	1 Pocket Large Clamshell	200	2.1	17	50 10
29367	5" Small Clamshell	500	2.7	13	35 10
29373	3 Pocket Large Clamshell	200	2.1	17	50 10
29421	4 oz. Shallow OVS Tray (Lid - 29332)	2500	1.2	11	60 6
29422	4 oz. Deep OVS Tray (Lid - 29332)	2500	1.2	11	60 6
29426	4 oz. Shallow OVS Tray (Lid - 29332)	2500	1.2	11	60 6
29427	4 oz. Deep OVS Tray (Lid - 29332)	2500	1.2	11	60 6
29509	Hinged Nacho Container (3.5 oz. Cup)	250	2.7	13	35 14
29567	5x5 Clamshell	500	2.7	23	35 13
29822	4 oz. Deep OVS Tray (Lid - 29332)	2500	1.8	19	50 6
29829	5 oz. OVS Tray (Lid - 29332)	2500	1.8	19	50 7
29927	4 oz. Deep OVS Tray (Lid - 29332)	2500	1.8	19	50 6
29929	5 oz. OVS Tray (Lid - 29332)	2500	1.8	19	50 7
5BB008	8 oz. Small Square Bowl	500	3.0	13	30 15
5BB008-BK	8 oz. Small Square Bowl	500	3.0	13	30 15
5BB012-BK	12 oz. Small Square Bowl	500	3.0	13	30 15
5BB016-BK	16 oz. Small Square Bowl	500	3.0	15	30 15
5BB200-DL	Dome Lid for Small Square Bowl	500	3.0	11	30 15
82612	2 Pocket Dipping Container (2 oz. Cup)	500	2.7	16	35 11
82723	3 Pocket Cold Food Tray	300	1.9	15	42 13
82725	Lid, 3 Pocket Food Tray	300	2.3	10	35 13
82638	24 oz. Salad Entree Base	250	1.3	14	64 15
82639	Lid, 24 oz. Salad Entree Base	250	2.8	14	28 15

WNA

a division of



THE WADDINGTON GROUP



14345 Northwest Freeway
Houston, TX 77040
Tel: (713) 686-6700
Fax: (713) 686-7733
Toll Free: 1-888-727-7252
atriumpackaging@wna.biz

ATRIUMTM

PACKAGING

Serving Our Schools



Follow us on social media